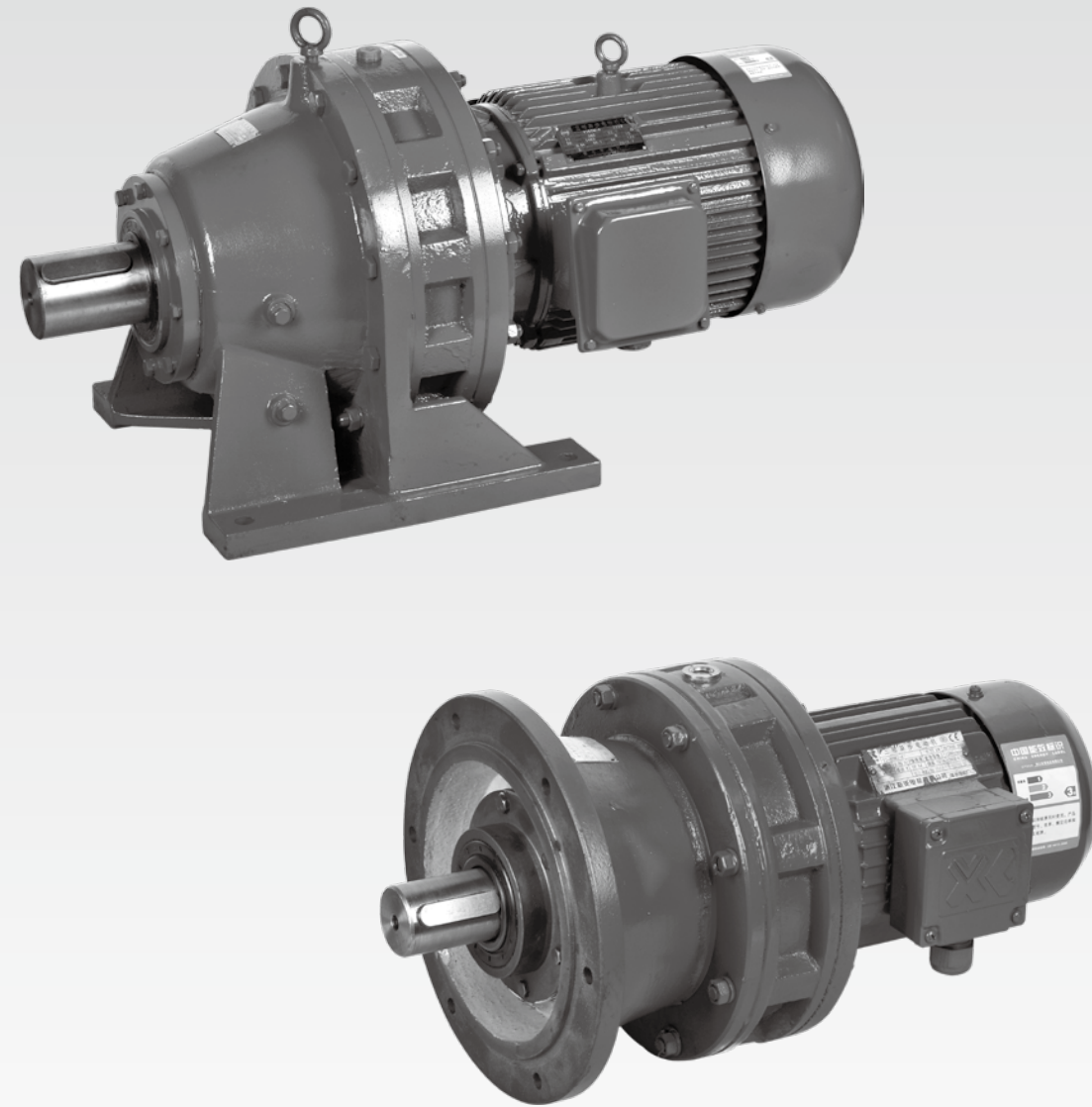


B.X 系列摆线针轮减速机

B.X Series of Cycloid Reducer



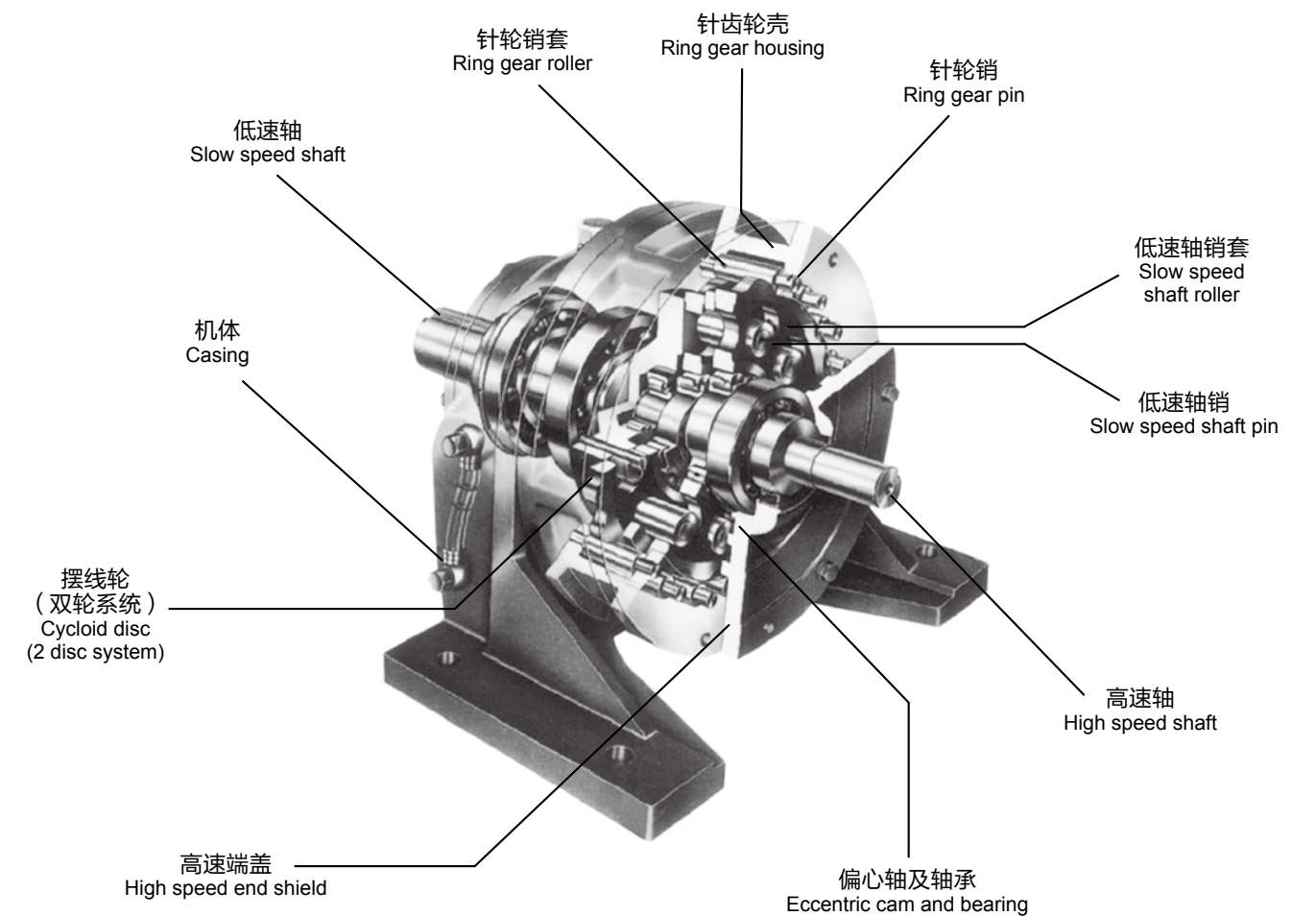
■ 概述 | Introduction

摆线针轮减速机是一种基于行星齿轮传动原理上，采用了摆线轮和针轮。其运动相似于一个轮子在绕一个环的内圈运动，当轮子（摆线轮）以顺时针沿着环（针齿壳）的内圈顺时针旋转时，此时摆线轮缓慢地绕自己的轴线逆时针旋转。

- **高减速比：**单级减速可达 87:1，双级减速可达 7569:1。
- **高效率：**单级传动可达 92.5%，双级传动可达 85%
- **低噪音：**这比一般齿轮减速机要低
- **经济效益高：**由于重量轻，低的传动惯量，高可靠性以及长寿命使得摆线针轮减速机有更大的经济效益。

Cycloid reducer is a reducer based on the planet gear transmission theory with the cycloid gear and pin gear adopted. Its movement is just like a wheel moving around in the inside track of a loop. When the wheel(cycloid gear) is moving clockwise around the inside track of the loop, the cycloid gear is rotating counterclockwise around its own spindle.

- **High reduction ratio:** for single-stage the reduction ratio can reach 87:1, and for double-stage the reduction ratio can reach 7569:1.
- **High efficiency:** For single-stage the efficiency can reach 92.5%. for double-stage the efficiency can reach 85%
- **Low noise:** lower than ordinary reducers.
- **High economic benefit:** The cycloid reducer has light weight, low transmission inertia, high reliability and long life service, so it can realize more economic benefit.



■ B.X 系列设计方案 | Design of B.X Series



X.BWD 型单级卧式摆线针轮减速机 (带电机)
X.BWD single-stage horizontal cycloid reducer (electric engine)



X.BWED 型双级卧式摆线针轮减速机 (带电机)
X.BWED double-stage horizontal cycloid reducer (electric engine)

X.BW 型单级卧式摆线针轮减速机
X.BW single-stage horizontal cycloid reducer

X.BLD 型单级立式摆线针轮减速机 (带电机)
X.BLD single-stage vertical cycloid reducer (electric engine)

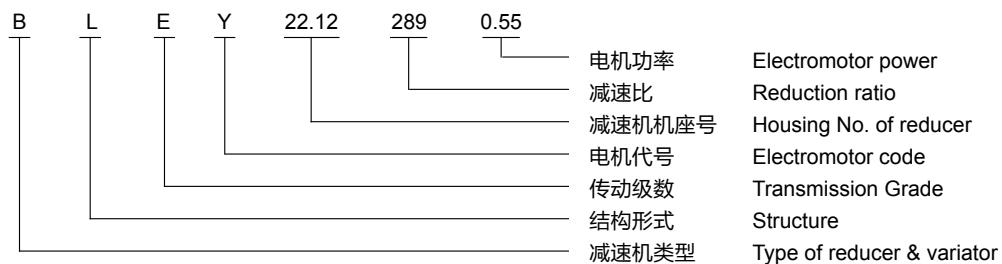


■ B.X 系列选型 | Options of B.X Series

使用条件及选型结果 使用条件○ 选型结果● Conditions and results Condition ○ Result ●

○ 负荷容量 (被驱动设备输入功率或输入转矩) Load capacity (Input power or input torque of the driven equipment)	P=1.1KW	
○ 电源电压 / Voltage	380V	
○ 电源频率 / Frequency	50Hz	
○ 要求转速 / Speed required	56r/min	
○ 负荷性质及运转时间 / Load pattern and operation time ● 确认使用系数 / Confirmation of usage coefficient ○ 启动次数 / Number of startups ● 确认启动次数 / Confirmation of startup coefficient ○ 可靠度 / Reliability ● 确认可靠度系数 / Confirmation of reliability coefficient ● 确认运行系数 / Confirmation of performance coefficient	均匀负荷, 14 小时 / 天 K _A =1.25 查表 P2 启动次数: 5 次 / 小时 K _S =1 查表 P4 可靠度: 一般 K _R =1 查表 P4 K=K _A * K _S * K _R =1.25	Uniform load, 14 hours/day K _A =1.25 check the table P2 Number of startups: 5 times/hour K _S =1 check the table P4 Reliability: Normal K _R =1 Check the table P4
○ 安装形式 / Type of installation ● 确认安装形式 / Confirmation of installation type	卧式安装 W1 查表 P212	Horizontal installation W1 check the table P212
○ 承载能力计算 / Calculation of bearing capacity ● 确认机型 / Confirmation of machine	M _{S2} =9550*P/ N ₂ =300N.m M ₂ ≥ M _{S2} * K=375N.m 根据 N ₂ 及 M ₂ 查表 P196 得: BWY18-43-1.1 Based on N ₂ and M ₂ & table P196: BWY18-43-1.1	
○ 环境条件 / Environmental condition ● 确认环境条件 / Confirmation of environmental condition	室内、环境温度 28℃ OK	Inside, ambient temperature 28℃
○ 电机规格 / Electromotor specification ● 确认电机规格 / Confirmation of electromotor specification	1.1-4、380V、50Hz 无制动器、室内型 / Without brake, for inside OK	
● 结束选型 / End of selection	BWY18-43-1.1-W1 380V、50Hz 无制动器、室内型 / Without brake, for inside	

■ B.X 系列型号规格表示方式 | Denotation of Specification & Dimension of B.X Series



减速机类型 Type of gearbox	结构形式 Structure	传动级数 Transmission Grade	电机代号 Electromotor code	减速机机座号 Housing no. of reducer	减速比 Reduction ratio	电机功率 Electromotor power
摆线针轮 减速机 B.X Cycloid reducer B.X	卧式: W Horizontal: W	单级 (省略) Single-stage (omitted)	普通 Y ₂ Normal Y ₂	见选型 参数表 See selections Parameter list	见选型 参数表 See selections Parameter list	见表 P196 See the table P196
			防爆 B Explosion protection B			
			制动 E Brake E			
	变频 V Frequency conversion V					
	立式: L Vertical: L	双级 (E) Two-stage (E)	变频制动 VE Brake by frequency conversion VE			
			多速 D Multi-speed D			
分马力 F Fractional horsepower F						

■ B.X 系列机型号对照表 (承载能力)

Machine Model CRT for B.X series (Carrying Capacity)

JB/T2982-94	机型号 Z Type of reducer Z	0	1	2	3	4	5	6	7	8	9	10	11	12
针齿中心圆 Needle Tooth Circle Center	直径 mm Diameter mm	75-94	95-105	106-120	140-155	168-185	210-230	250-275	280-300	315-335	380-440	440-460	535-555	645-690
单级机型号 Type of single-stage reducer	X 系列 X series	0	1	2	3	4	5	6	7	8	9	10	11	12
	B 系列 B series	085	10	12	15	18	22	27		33	39	45	55	65
		10A	10	11	12	13	14		15	16				
	化工型 Chemical			1	2	3	4		5	6	7	8	9	

■ B.X 系列结构形式 | Type Installation

结构形式 Structure	传动级数 Transmission Grade	
	一级 Single-stage	二级 Two-stage
双轴型卧式 Double shafts horizontal type	W	WE
直联型卧式 Direct drive horizontal type	WY	WEY
双轴型立式 Double shafts vertical type	L	LE
直联型立式 Direct drive vertical type	LY	LEY

■ B.X 系列单级减速机减速比和输入功率

Reduction Ratio and Input Power of B.X Series Single-stage Reducer

减速比 Reduction ratio	9	11	13*	15*	17	19*	23	29	35	43	47*	55*	59	63*	71	87	转数 Revolutions	
机型号 Machine Model	输入功率 (KW) Input power																	
B085	0.18	0.18	0.18	0.18	0.18	0.18	0.12	.012	0.12								1500 r/min	
B10	0.55	0.55	0.55	0.55	0.55	0.55	0.37	0.25	0.18	0.18								
B12	0.75	0.75	0.75	0.75	0.75	0.75	0.55	0.37	0.37	0.37	0.37	0.25	0.18					
B15(X3)	1.5	1.5	1.5	1.5	1.5	1.5	1.5	1.1	1.1	0.55	0.55	0.55	0.55	0.55	0.55			
B18(X4)	4	4	4	4	4	3	2.2	2.2	1.5	1.5	1.5	1.1	1.1	1.1	0.75	0.55		
B22(X5)	7.5	7.5	7.5	7.5	7.5	7.5	5.5	5.5	4	3	3	2.2	2.2	2.2	1.5	1.5		
B27(X6)	11	11	11	11	11	11	11	11	7.5	5.5	5.5	4	4	4	3	3		
X7	15	15	15	15	15	15	11	11	11	7.5	5.5	5.5	5.5	5.5	4	4		
B33(X8)		18.5	18.5	18.5	18.5	18.5	18.5	15	15	11	11	7.5	7.5	7.5	5.5	5.5	1000 r/min	
B39(X9)		22	22	22	22	22	18.5	18.5	18.5	15	15	15	11	11	11	11		
B45(X10)		45	45	45	45	45	37	30	22	22	22	18.5	18.5	18.5	18.5	15		
B55(X11)			55	55	55	55	55	37	37	37	37	30	30	30	22	22		
B65(X12)							75					55	55	45	45	37		30
输出转速 r/min output speed	167	136	115	100	88	79	65	52	43	35	32	27	25	24	21	17		1500
	111	91	77	67	59	53	43	34	29	23	21	18	17	16	14	11	1000	

■ B.X 系列一级减速机输出轴的许用转矩

Permissible Torque for Output Axis of B.X Series Single-stage Reducer

减速比 Reduction ratio	9	11	13*	15*	17	19*	23	29	35	43	47*	55*	59	63*	71	87
机型号 B.X Machine Model	输出轴许用转矩 N.m Output shaft permissible output torque															
B085(X0)	10	12.4	14	16	19	20	17	21	26							
B10(X1)	28	35	42	49	54	61	50	42	51	62						
B12(X2)	42	48	57	66	75	83	54	68	82	101	102	81	86			
B15(X3)	79	142	114	132	149	167	202	187	225	151	151	177	207	203	166	
B18(X4)	211	258	305	351	398	334	296	374	307	378	413	354	380	406	333	280
B22(X5)	395	483	571	659	746	835	741	934	820	755	826	709	760	812	624	764
B27(X6)	580	708	838	966	1095	1224	1481	1868	1537	1385	1514	1289	1382	1476	1247	1121
X7	766	966	1142	1318	1493	1669	1481	1868	2254	1888	1514	1772	1900	2030	1663	2037
B33(X8)		1787	2113	2438	2762	3088	2492	2547	3074	2769	3028	2416	2591	2768	2286	2801
B39(X9)		2125	2570	2965	3284	3673	3737	4711	5686	3776	4129	4832	3800	4059	4572	5603
B45(X10)		4347	5140	5931	6718	7512	8079	7640	6762	8307	9085	8940	9585	10240	11535	7640
B55(X11)			6282	7248	8211	9181	11109	14007	12294	15104	15279	14497	15543	16606	13717	16808
B65(X12)					11197	12520	15148	19100	23052	20769	22712	21745	23315	20480	18705	22920

注: 表格内带 * 的为非标。 Note: * form with a non-standard.

■ B.X 系列三级减速机输出轴的许用转矩

Permissible Torque for Output Axis of B.X Series Three-stage Reducer

减速比 Reduction ratio	2057-446571					
机型号 Machine Model	B	18.12.085		39.22.15	45.27.15	55.33.15
	X	420	742	953	1063	1174
输出轴许用转矩 N.m Output shaft permissible output torque		540	2650	8820	11760	21560
						29400

B.X 系列双级减速机选型参数表

Parameter List About Selection Two-stage of B.X Series

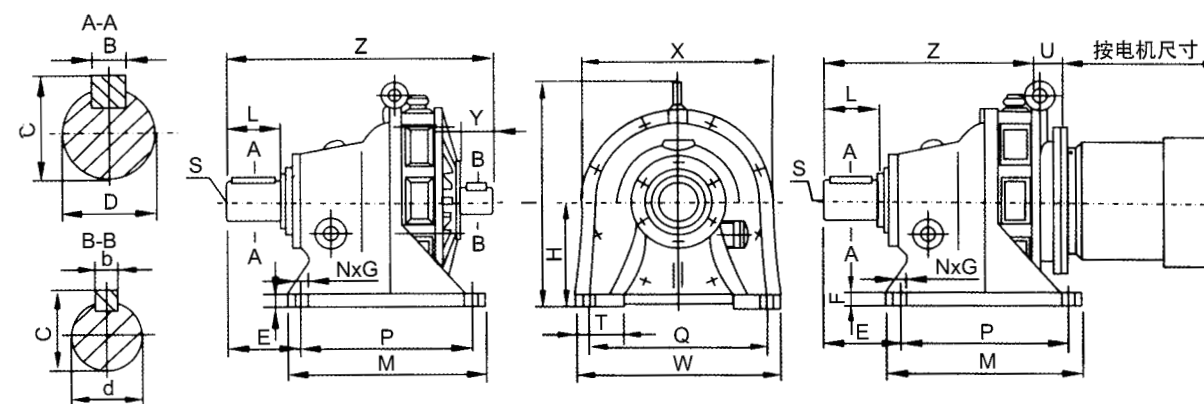
机型号 Machine Model	12.085 X20	15.10 X31	18.12 X42	22.12 X52	22.15 X53	27.15 X63	27.18 X64	X74	33.18 X84	33.22 X85	39.22 X95	45.27 X106	55.29 X117	65.33 X128	输出转速 r/min Output speed
输入转速 Input speed	1500r/min														
减速比 Reduction ratio	输入功率 (KW) Input power														
121(11×11)	0.18	0.25	0.75	0.75	1.5	1.5	3	4 3	4	7.5+ 5.5	7.5	11 7.5	-	-	12.4
187(17×11)	0.18	0.18	0.55	0.75	1.5	1.5	2.2	3+ 2.2	3	5.5+ 4	7.5+ 5.5	11 7.5	15 11	18.5 15	8
289(17×17)	-	0.18	0.37	0.55	0.75	1.5	1.5	2.2+ 1.5	2.2	4 3	5.5 4	11 7.5+	15+ 11	18.5 15	5.2
391(23×17)	-	-	0.25	0.55	0.75	1.1	1.1+ 0.75	1.1	2.2	3+ 2.2	5.5+ 4	7.5+ 5.5	-	-	3.8
493(29×17)	-	-	0.25	0.37	0.55	0.75	0.75	1.1	1.5	2.2 1.5	4+ 3	5.5+ 4	-	-	3
595(35×17)	-	-	0.18	0.37	-	0.75	0.55	0.75	1.1	2.2+ 1.5	3 2.2	4+ 3	7.5+ 5.5	11+ 7.5	2.5
731(43×17)	-	-	0.18	0.25	-	0.55	0.55	0.55	1.1	1.5+ 1.1	2.2 1.5	3 2.2	5.5 4	7.5 5.5	2
841(29×29)	-	-	-	0.18	-	0.55	-	0.55	0.75	1.1	1.5	2.2	5.5+ 4	5.5 7.5+	1.8
1003(59×17)	-	-	-	0.18	-	0.37	-	-	0.75	-	1.5	2.2	4	5.5	1.5
1225(35×35)	-	-	-	-	-	0.37	-	-	0.55	-	1.1	2.2	4+	5.5+	1.2
1505(43×35)	-	-	-	-	-	0.37	-	-	-	-	-	-	-	-	1
1849(43×43)	-	-	-	-	-	0.37	-	-	-	-	-	-	-	-	0.8
2065(59×35)	-	-	-	-	-	0.37	-	-	-	-	-	-	-	-	0.7
2537(59×43)	-	-	-	-	-	0.37	-	-	-	-	-	-	-	-	0.6
3481(59×59)	-	-	-	-	-	0.37	-	-	-	-	-	-	-	-	0.4
5133(87×59)	-	-	-	-	-	-	-	-	-	-	-	-	-	-	0.3
7569(87×87)	-	-	-	-	-	-	-	-	-	-	-	-	-	-	0.2
输出轴许用转矩 N.m Output shaft permissible output torque	150	280	540	720	1275	2255	2385	2650	3180	4510	8820	11760	21560	29400	

注：1、在限制许用转矩下符号(-)处的输入功率可采用该机型号下的最小额定输入功率；
2、格子内有+的功率数字是大于减速机在设计功率要在转矩的范围内使用。

Note: 1. For the sign of (-) in permissible torque, the minimum rated input power should be adopted.
2. If the power figure marked + in the lattice is larger than the designed power, should be used in the permissible torque.

BW. BWY. XW. XWY 单级摆线减速机外形及安装尺寸

Overall and Installation Dimensions of BW, BWY, XW and XWY Single-stage Cycloid Reducer

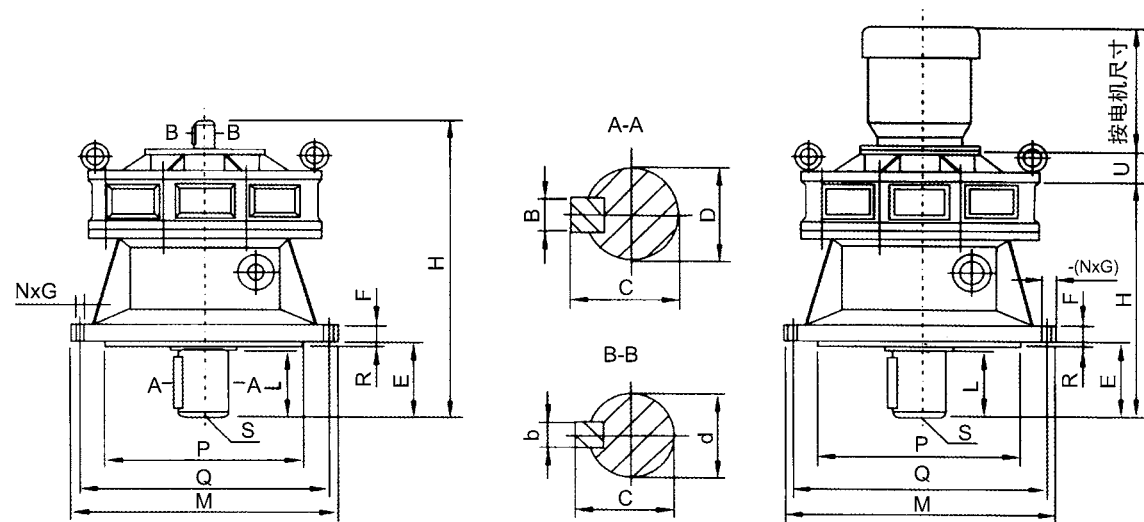


机型号 Machine Model	外形尺寸 Overall dimension						安装尺寸 Installation dimension							输出轴尺寸 Output shaft dimension				输入轴尺寸 Input shaft dimension					
	M	W	Z		I	X	U	H	E	F	P	Q	S	T	NXG	B	C	D	L	b	c	d	y
B085	94	155	155	115	127	115		60	43	10	70	135	M5	30	4×9	5	16	14	23	3	11.5	10	15
X0	84	144	125	84	146.5	113		80	36	10	60	120	M5	35	4×10	5	16	14	20	4	11.5	10	15
B10	100	145	192	139	160	140		80	47	12	76	120	M5	35	4×11	6	24.5	22	30	5	17	15	25
X1	120	180	202	159	175	150		100	60	12	90	150	M8	40	4×12	8	31	25	35	5	17	15	25
B12	120	185	228	165	184	168		100	93	18	90	150	M8	35	4×11	8	33	30	35	5	17	15	22
X2	120	210	214	159	175	150		100	101	15	90	150	M8	45	4×12	8	28	25	34	5	17	15	25
B15	160	280	272	202	260	210		120	125	20	110	240	M8	55	4×13	10	38	35	56	6	20.5	18	35
X3	150	290	272	202	280	210		140	141	20	100	250	M8	55	4×16	10	38	35	56	6	20.5	18	35
B18	200	320	320	246	310	250	22	140	145	22	150	280	M8	60	4×13	14	48.5	45	71	6	24.5	22	40
X4	200	330	320	246	320	250	22	150	166	22	145	290	M10	65	4×13	14	48.5	45	71	6	24.5	22	40
B22	250	390	390	297	365	300	26	160	158	28	200	340	M10	75	4×17	16	59	55	80	8	33	30	55
X5	260	420	401	308	365	300	26	160	206	25	150	370	M12	75	4×16	16	59	55	91	8	33	30	55
B27	380	400	469	364	439	350	26	200	155	28	320	340	M12	80	4×22	20	74.5	70	102	10	38	35	60
X6	335	430	456	351	439	350	26	200	125	30	275	380	M12	75	4×22	18	69	65	90	10	38	35	60
X7	380	470	529	390	460	360	26	220	145	30	320	420	M12	75	4×22	22	85	80	109	12	43	40	65
B33	440	470	577	437	513	440	125	240	159	32	380	420	M16	80	4×22	25	95	90	120	14	48.5	45	70
X8	440	530	600	448	523	440	125	250	155	35	380	480	M16	80	4×22	25	95	90	120	14	48.5	45	70
B39	520	560	700	528	605	520	143	280	200	40	440	500	M20	90	4×26	28	106	100	140	16	53.5	50	81
X9	560	620	723	552	614	520	143	290	186	40	480	560	M20	120	4×26	28	106	100	141	16	53.5	50	80
B45	600	690	813	612	706	580	160	325	230	45	500	630	M24	120	4×30	28	116	110	150	16	59	55	100
X10	600	690	813	612	706	580	160	325	230	45	500	630	M24	120	4×30	28	116	110	150	16	60	55	100
B55	810	880	1065		883	710		420	324	50	330x2	800	M30	140	6×32	32	137	130	202	20	76	70	120
X11	810	880	1065		883	710		420	324	50	330x2	800	M30	140	6×32	32	137	130	202	20	76	70	120
B65	1040	1160	1462		1163	990		540	485	60	420x2	1050	M42	200	6×45	45	190	180	330	25	95	90	150
X12	1040	1160	1262		1163	990		540	485	60	420x2	1050	M42	200	6×45	45	190	180	330	25	95	90	150

注：1、输出轴端“D”机型 085-12 为 JS6, 15-65 为 K6；
2、输入轴端“d”机型 085-27 为 h6, 33-65 为 K6。
Note: 1. Type of output axis D: JS6 for 085-12 while K6 for 15-65;
2. Type of input axis d: h6 for 085-27 while k6 for 33-65.

BL. BLY. XL. XLY 单级摆线减速机外形及安装尺寸

Overall and Installation Dimensions of BL, BLY, XL and XLY Single-stage Cycloid Reducer



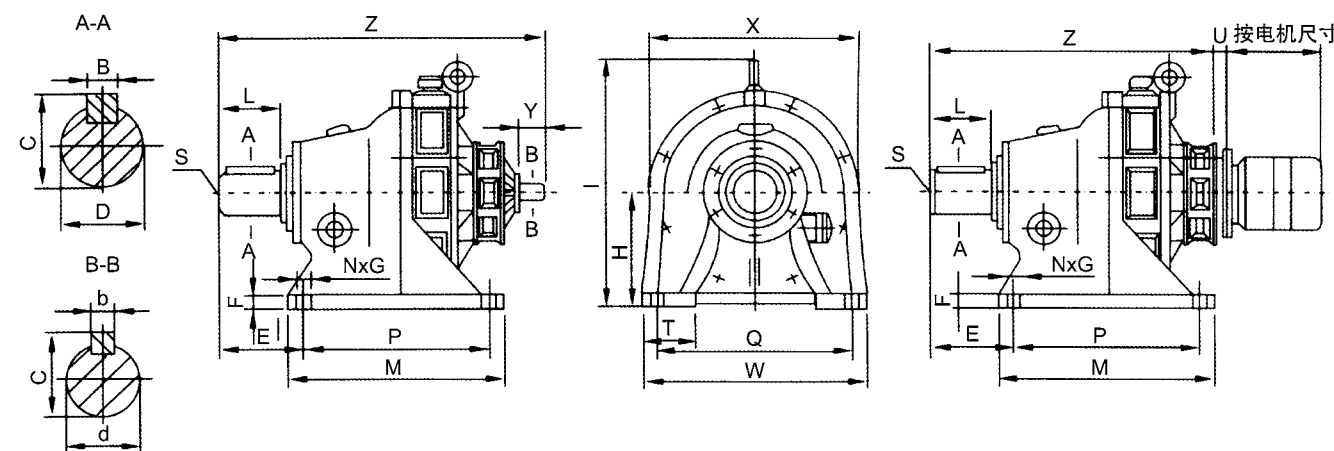
机型号 Machine Model	外形尺寸 Overall dimension		安装尺寸 Installation dimension								输出轴尺寸 Output shaft dimension				输入轴尺寸 Input shaft dimension				
	H		M	U	E	F	NXG	P	Q	R	S	B	C	D	L	b	c	d	y
	BL	BLY																	
B085	115	155	120		29	10	4×9	80	102	3	M5	5	16	14	23	3	11.2	10	15
X0	125	157	120		29	8	4×9	80	102	3	M5	5	16	14	20	4	11.5	10	15
B10	192	139	160		35	10	4×11	110	134	3	M5	6	24.5	22	30	5	17	15	25
X1	202	111	160		48	10	4×12	110	134	3	M8	8	31	25	35	5	17	15	25
B12	228	165	190		39	10	4×11	140	160	3	M8	8	33	30	35	5	17	15	22
X2	212	115	180		42	12	6×11	130	160	3	M8	8	28	25	34	5	17	15	25
B15	272	202	230		53	12	6×11	170	200	4	M8	10	38	35	45	6	20.5	18	35
X3	272	202	230		53	12	6×11	170	200	4	M8	10	38	35	45	6	20.5	18	35
B18	320	246	260	22	71	16	6×11	200	230	4	M8	14	48.5	45	61	6	24.5	22	40
X4	320	246	260	22	71	16	6×11	200	230	4	M8	14	48.5	45	61	6	24.5	22	40
B22	390	297	340	26	80	20	6×13	270	310	5	M10	16	59	55	75	8	33	30	55
X5	401	308	340	26	91	20	6×13	270	310	5	M10	16	59	55	86	8	33	30	55
B27	469	364	400	26	100	22	8×15	320	360	5	M12	20	74.5	70	92	10	38	35	60
X6	456	351	400	26	92	22	8×15	316	360	5	M12	18	69	65	79	10	38	35	60
X7	532	393	430	26	114	22	8×18	345	390	5	M12	22	85	80	98	12	43	40	65
B33	577	437	490	125	115	32	12×18	400	450	5	M16	25	95	90	108	14	48.5	45	70
X8	600	448	490	125	112	30	12×18	400	450	5	M16	25	95	90	110	14	48.5	45	70
B39	700	528	580	143	139	35	12×22	460	520	8	M20	28	108	100	130	16	53.5	50	81
X9	723	552	580	143	170	35	12×22	455	520	8	M20	28	108	100	129	16	53.5	50	80
B45	814	612	650	160	174	40	12×22	520	590	10	M24	28	116	110	140	16	60	55	100
X10	814	612	650	160	174	40	12×22	520	590	10	M24	28	116	110	140	16	60	55	100
B55	1050		880		210	45	12×38	680	800	10	M30	32	137	130	184	20	76	70	120
X11	1050		880		210	45	12×38	680	800	10	M30	32	137	130	184	20	76	70	120
B65	1148		1160		370	60	8×39	900	1020	10	M42	45	190	180	320	25	95	90	150
X12	1148		1160		370	60	8×39	900	1020	10	M42	45	190	180	320	25	95	90	150

注: 1、输出轴端“D”机型 085-12 为 JS6, 15-65 为 K6;
Note: 1. Type of output axis D: JS6 for 085-12 while K6 for 15-65;

2、输入轴端“d”机型 085-27 为 h6, 33-65 为 K6。
2. Type of input axis d: h6 for 085-27 while k6 for 33-65.

BWE. BWEY. XWE. XWEY 双级摆线减速机外形及安装尺寸

Overall & Installation Dimensions of BWE, BWEY, XWE and XWEY Single-stage Cycloid Reducer



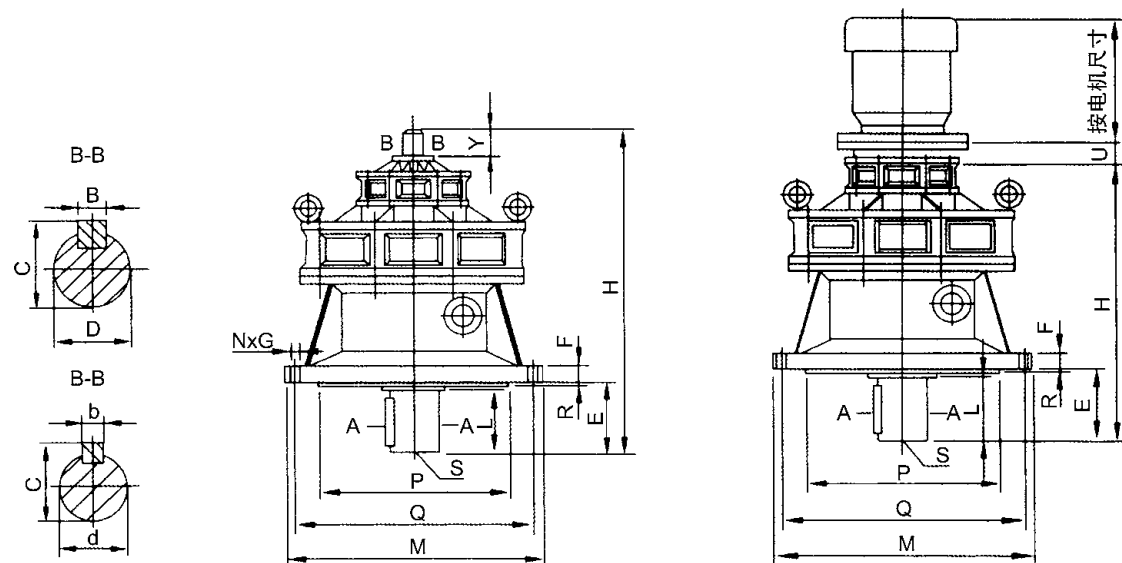
机型号 Machine Model	外形尺寸 Overall dimension				安装尺寸 Installation dimension										输出轴尺寸 Output shaft dimension				输入轴尺寸 Input shaft dimension				
	M	W	Z		I	X	U	H	E	F	P	Q	S	T	NXG	B	C	D	L	b	c	d	y
			BWE	BWEY																			
B12.085	120	185	250	210	184	168		100	93	18	90	150	M8	35	4×11	8	33	30	35	3	11.2	10	15
B15.10	160	280	326	276	260	210		120	125	20	110	240	M8	55	4×13	10	38	35	56	5	17	15	25
B18.12	200	320	388	336	310	250		140	145	22	150	280	M8	60	4×13	14	48.5	45	71	5	17	15	22
X42	200	330	388	336	320	250		150	166	22	145	290	M8	65	4×13	14	48.5	45	71	5	17	15	22
B22.12	250	390	472	412	365	300		160	158	28	200	340	M10	75	4×17	16	59	55	80	5	17	15	22
B22.15	250	390	472	424	365	300		160	158	28	200	340	M10	75	4×17	16	59	55	80	6	20.5	18	35
X53	260	420	482	414	365	300		160	206	25	150	370	M10	75	4×16	16	59	55	91	6	20.5	18	35
B27.15	280	400	610	487	439	350		200	155	28	320	340	M12	80	4×22	20	74.5	70	102	6	20.5	18	35
X63	335	430	543	474	439	350		200	125	30	275	380	M12	75	4×22	18	69	65	90	6	20.5	18	35
B27.18	380	400	563	510	439	350	22	200	155	28	320	340	M12	80	4×22	20	74.5	70	102	6	24.5	22	40
B33.18	440	470	653	576	513	440	22	240	159	32	380	420	M16	80	4×22	25	95	90	120	6	24.5	22	40
X84	440	530	653	576	523	440	22	250	155	35	380	480	M16	80	4×22	25	95	90	120	6	33	22	40
B33.22	440	470	701	605	513	440	26	240	159	32	380	420	M16	80	4×22	25	95	90	120	8	33	30	55
X85	440	530	701	605	523	440	26	250	155	35	380	480	M16	80	4×22	25	95	90	120	8	33	30	55
B39.22	520	560	775	705	614	520	26	280	200	40	440	500	M20	90	4×26	28	106	100	140	8	33	30	55
X95	560	620	775	705	614	520	26	290	186	40	480	560	M20	120	4×26	28	106	100	141	8	33	30	45
B45.27	600	690	884	760	706	580	26	325	230	45	500	630	M24	120	4×30	28	116	110	150	10	38	35	54
X106	600	690	884	760	706	580	26	325	230	45	500	630	M24	120	4×30	28	116	110	150	10	38	35	54
B55.29	810	880	1106	968	883	710		420	324	50	330×2	800	M30	140	6×32	32	137	130	202	12	43	40	65
X117	810	880	1106	968	883	710		420	324	50	330×2	800	M30	140	6×32	32	137	130	202	12	43	40	65
B65.33	1040	1160	1503		1163	990		540	485	60	420×2	1050	M42	200	6×45	45	190	180	330	14	48.5	45	70
X128	1040	1160	1503		1163	990		540	485	60	420×2	1050	M42	200	6×45	45	190	180	330	14	48.5	45	70

注: 1、输出轴端“D”机型 085-12 为 JS6, 15-65 为 K6;
Note: 1. Type of output axis D: JS6 for 085-12 while K6 for 15-65;

2、输入轴端“d”机型 085-27 为 h6, 33-65 为 K6。
2. Type of input axis d: h6 for 085-27 while k6 for 33-65.

BLE. BLEY. XLE. XLEY 双级摆线减速机外形及安装尺寸

Overall & Installation Dimensions of BLE, BLEY, XLE and XLEY Single-stage Cycloid Reducer



机型号 Machine Model	外形尺寸 Overall dimension		安装尺寸 Installation dimension								输出轴尺寸 Output shaft dimension				输入轴尺寸 Input shaft dimension				
	H		M	U	E	F	NXG	P	Q	R	S	B	C	D	L	b	c	d	y
	BL	BLY																	
B12.085	250	210	190		39	10	4×11	140	160	3	M8	8	33	30	35	3	11.2	10	15
B15.10	326	276	230		53	12	6×11	170	200	4	M8	10	38	35	55	5	17	15	25
B18.12	388	336	260		71	16	6×11	200	230	4	M8	14	48.5	45	61	5	17	15	22
X42	388	336	260		71	16	6×11	200	230	4	M8	14	48.5	45	61	5	17	15	22
B22.12	472	412	340		80	20	6×13	270	310	5	M10	16	59	55	75	5	17	15	22
B22.15	472	424	340		80	20	6×13	270	310	5	M10	16	59	55	75	6	20.5	18	35
X53	482	414	340		91	20	6×13	270	310	5	M10	16	59	55	86	6	20.5	18	35
B27.15	556	487	400		100	22	8×15	320	360	5	M12	20	74.5	70	92	6	20.5	18	35
X63	543	474	400		90	22	8×15	316	360	5	M12	18	69	65	79	6	20.5	18	35
B27.18	563	490	400	22	100	22	8×15	320	360	5	M12	20	95	70	92	6	24.5	22	40
B33.18	653	555	490	22	115	32	12×18	400	450	5	M16	25	95	90	108	6	24.5	22	40
X84	653	555	490	22	112	30	12×18	400	450	5	M16	25	95	90	110	6	24.5	22	40
B33.22	675	580	490	26	112	32	12×18	400	450	5	M16	25	95	90	108	8	33	30	55
X85	675	580	490	26	112	30	12×18	400	450	5	M16	25	95	90	110	8	33	30	55
B39.22	771	676	580	26	139	35	12×21	460	520	8	M20	28	106	100	130	8	33	30	55
X95	771	676	580	26	139	35	12×21	460	520	8	M20	28	116	100	130	8	33	30	55
B45.27	884	690	650	26	174	40	12×22	520	590	10	M24	28	116	110	140	10	38	35	54
X106	884	690	650	26	174	40	12×22	520	590	10	M24	28	116	110	140	10	38	35	54
B55.29	1106		880		210	50	12×38	680	800	10	M30	32	137	130	184	12	43	40	65
X117	1106		880		210	50	12×38	680	800	10	M30	32	137	130	184	12	43	40	65
B65.33	1503		1160		370	60	8×39	900	1020	10	M42	45	190	180	320	14	48.5	45	70
X128	1503		1160		370	60	8×39	900	1020	10	M42	45	190	180	320	14	48.5	45	70

注: 1、输出轴端“D”机型 085-12 为 JS6, 15-65 为 K6;
Note: 1. Type of output axis D: JS6 for 085-12 while K6 for 15-65;

2、输入轴端“d”机型 085-27 为 h6, 33-65 为 K6。
2. Type of input axis d: h6 for 085-27 while k6 for 33-65.

润滑

- 一、建议用油脂
- 1、壳牌 RA 号润滑油
- 2、Cosmo SH No2 号油脂
- 3、二硫化钼 -2 或 ZL-2
- 二、建议用润滑油

Lubricate

- 一、Suggested grease
- 1. Shell RA grease
- 2. Cosmo SH No2 grease
- 3. MoS2 -2 or ZL-2
- 二、Suggested lubricant

环境程度 Environmental degree	海湾 / Gulf	埃索 / ESSO	Mobil	壳牌 / shell	加结士 / Crest	BP
-10°C ~5°C	EP HD68	Spartan EP68	齿轮油 (Gear Oil) 626	Omala 68		Energol GR-XP68
0°C ~35°C	EP HD100 HD150	Spartan EP100 EP150	齿轮油 (Gear Oil) 627 629	Omala 100 150	Meropa 100 150	Energol GR-XP100 GR-XP150
30°C ~50°C	EP HD220 HD320 HD460	Spartan EP100 EP320 EP460	齿轮油 (Gear Oil) 630 632 633 634	Omala 220 320 460	Meropa 220 320 460	Energol GR-XP220 GR-XP320 GR-XP460

Lubrication

- 一、Recommended Grease
- 1. Shell Alvania Grease
- 2. Cosmo Grease Dynamax
- 3. Shell Alvania Grease
- 4. MoS2 or ZL-2
- 二、Recommended Oil

RA
SHN0.2
2

Ambient Temp.	Gulf	Esso Oil	Mobil Oil	Shell Oil	Caltex Oil	BP Oil
-10°C ~5°C	EP Lubricant HD68	Spartan EP68	Mobil gear 626 (ISOVG 68)	Omala Oil 68		Energol GR-XP68
0°C ~35°C	EP Lubricant HD100 HD150	Spartan EP100 EP150	Mobil gear 627 629 (ISOVG 100,150)	Omala Oil 100 150	Meropa 100 150	Energol GR-XP100 GR-XP150
30°C ~50°C	EP Lubricant HD220 HD320 HD460	Spartan EP100 EP320 EP460	Mobil gear 630 632 633 634 (ISOVG 220~460)	Omala Oil 220 320 460	Meropa 220 320	Energol GR-XP220 GR-XP320 GR-XP460

Note: (1) For use in winter or relatively low ambient temperature, use lower viscosity oil specified for each ambient temperature range.
(2) For consistent use in ambient temperatures other than 0°C -40°C, please consult us.